



TYPE:HS-L6



532wavelength 1064wavelength Whiten & Renew wavelength

Applications

- Whiten and refine face: remove flecks, shrink pore, improve the elasticity and shine, improve skin texture ,restrain oil secretion too much
- Deep cleaning
- Elimination the pigment lesions (endogenous pigmentation), the pigmentation form both mixed coloring matter and traumatic pigmentation

Features&Advantages

- ★Special designed cooling system ensures constantly working over two hours
- ★Micro computer counts the shoots;
- ★Portable and aseismatic, convenient for transportation;
- ★User friendly interface with colourful LCD display;
- ★Remove pigmentation without side effects or scar;
- ★Short treatment period with outstanding effect.
- ★Changeable laser treatment applicator,more options for customer's need.

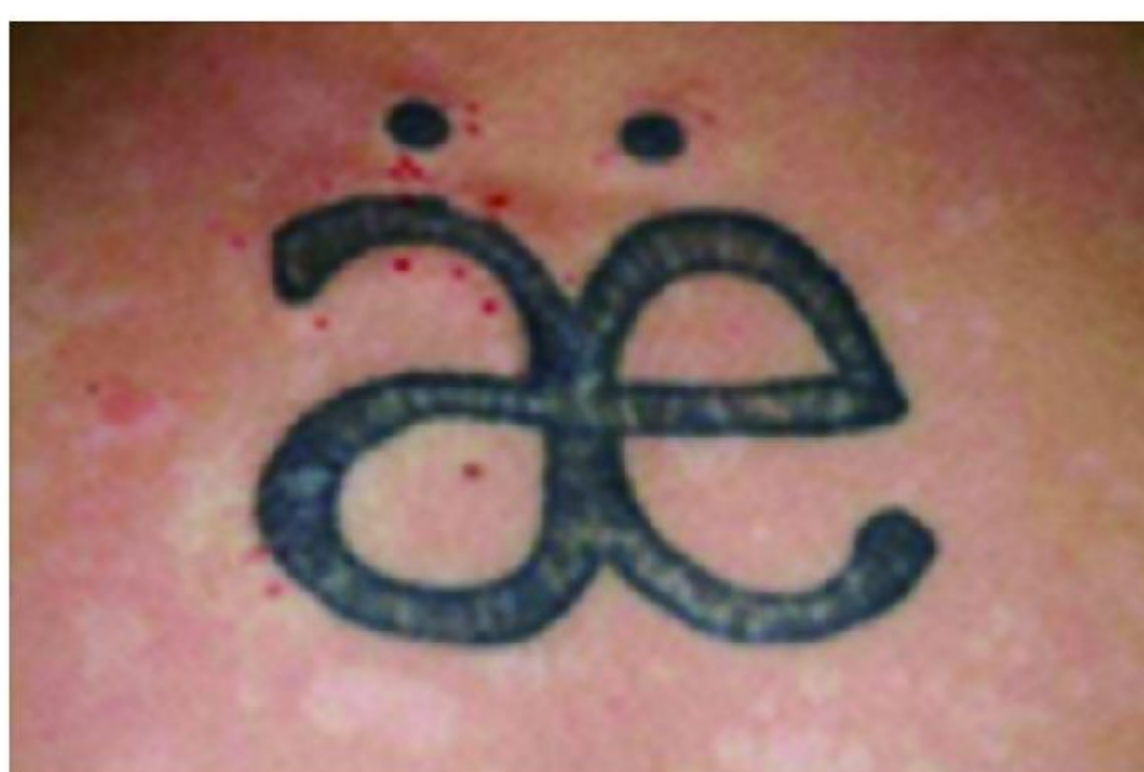
Specifications

Laser type: Q-switch ND: YAG Wavelength: 1064nm&532nm
 Pulse type: Q-switch Energy: 10---980mj
 Spot Size : 1--5mm2 (adjustable)
 Pulse Duration: 6--8ns Pulse Rate: 1---5Hz
 Power supply: 110V AC/ 60 Hz or 220V AC/ 50 Hz or 60 Hz
 Cooling mode: water cooling +air cooling
 Security Standard: Max 5A



Whiten & Renew

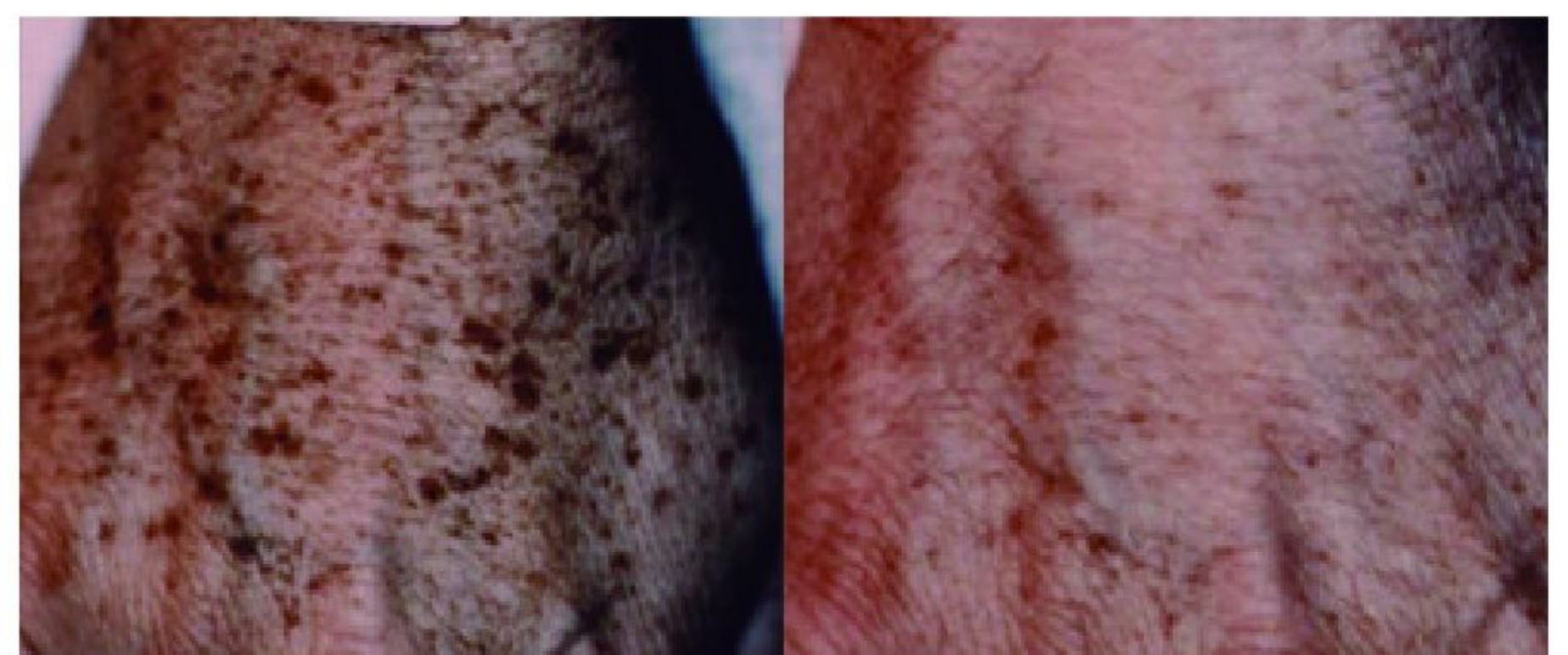
Before & After



Before



After



Before

After